

Porcine Epidemic Diarrhea Virus (PEDV)

Basic Biosecurity for Tagging 4-H Swine

PEDV was confirmed in the United States in May 2013. It is highly infectious to other pigs causing severe diarrhea and vomiting in pigs of all ages. PEDV is spread via oral contact with contaminated manure. It is only infectious to swine and is not a food safety concern. The most common sources of infected manure are pigs, trucks, boots, clothing, equipment and supplies. Activities, such as walking into a contaminated barn or trailer can increase risk for disease spread. Assume every pig site is a risk. Wear clean boots and clothing at each pig site. Do not be responsible for transferring PEDV.

WHEN WORKING WITH PIGS

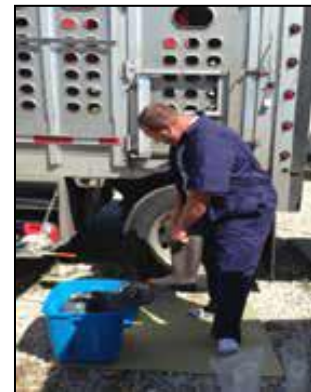
In order to prevent the spread of PEDV from one farm to another it is IMPORTANT to wear clean clothes or cover-up, contain soiled clothing and footwear after use, and wash clothing and footwear prior to working with pigs from another site.

Cover-Up

- Owners and verifiers should wear clean clothes and footwear which can be cleaned and disinfected after use (or wear disposable or washable coveralls over clothing and disposable plastic boots over footwear).



Left: Covering up with disposable coverall and plastic boots over footwear



Right: Covering up with washable coveralls and boots

Contain

- Have a garbage bag for containing disposable coveralls and plastic boots after use. Dispose of disposable covering before leaving site where used at.
- Have a garbage bag or container to store washable clothing and footwear for transport to site of cleaning.



Left: Containing disposable coveralls and plastic boots in garbage bag for disposing



Right: Containing washable coveralls and footwear that is soiled for transport to site of cleaning

Clean up to Remove Risk

- Clean up by washing and disinfecting all clothing and footwear prior to working with pigs from other sites. This includes washing hands.
- Clothing should be washed in hot water with laundry detergent
- Footwear should be washed by removing all manure, shavings, straw, etc. followed by disinfecting with an effective disinfectant (see list below) according to label directions.

All photos are by National Pork Board



WHEN TAGGING PIGS

- Owners should be the only person to enter the facility or trailer to restrain the pig(s).
- If tagging can be done at the back of the trailer:
 - Owners should sort pigs to the back gate and restrain the pigs.
 - Staff assisting in ear tagging should NOT enter the trailer.
- Start with clean and disinfected taggers and have multiple taggers available that are clean and ready to use.
- Clean and disinfect tagger between pig(s) from each site.
 - Soiled tagger should be cleaned and disinfected at the site of use or be placed in a clean zip-lock bag for transport to site of cleaning. **NEVER** bring soiled tagger to another pig site.

PEDV is transmitted via infected manure. It can survive in the manure for extended periods of time. Any object that is contaminated with pig manure can be a source of infection. Therefore it is extremely important to thoroughly clean and disinfect equipment after each use prior to reuse at another farm with pigs.

PROPER CLEANING AND DISINFECTION OF TAGGER

Soiled tagger(s) should be cleaned and disinfected at the site of use **or** be placed in a clean zip-lock bag for transport to site of cleaning. **NEVER** bring soiled tagger to another pig site.

1. Wash the tagger with hot water to remove all organic matter. Organic matter includes manure, shavings, straw, etc.
2. Use soap/detergent and a brush for scrubbing to help with the removal of organic matter
3. Rinse with water
4. Repeat steps 1 - 3 until tagger is free of any visible manure or other organic matter.
5. Disinfect tagger so all surfaces are thoroughly wet. Use one of the effective disinfectants (listed at right) for PEDV according to label directions with the correct concentration and proper contact time.
6. Rinse and allow tagger to dry completely prior to the next use.
7. Swiffer wipes can be used to test for cleanliness. If Swiffer wipes are soiled after wiping tagger, the tagger is still dirty and steps 1 - 6 should be repeated.

Effective Disinfectants

- Synergize
- Virkon S
- Tek-Trol
- 1Stroke Environ
- Clorox

If questions contact:

Sarah Schieck, U of MN Swine Extension Educator – (320) 589-1711, schi0466@umn.edu.